

FL5524D-C FL5539D-C FL5554D-C

LED Vanity

Features

Housing

Die-formed Cold-rolled Steel
 Finish Option: - 30 Oil Rubbed Bronze, - 62 Satin Nickel

Optical

Shade: High Transmission Acrylic Create Excellent Light Distribution and Uniformity
 LED: High Efficiency, High CRI, Binned and Mixed to Reach Uniform Light.
 LED CRI > 80

Electrical

High Power Factor, Low THD

Lamp

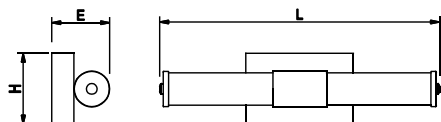
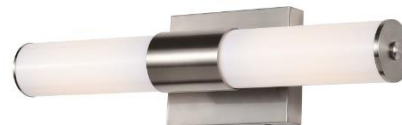
LED Type: Built-in (Color Temperature Option – 3000K, 3500K, 4000K, 5000K)
 MCT Type: Adjustable Multiple Color Temperature (3000K, 3500K, 4000K)

Certification

ETL/cETL Listed, Energy Star

Warranty

5 Years Warranty on Driver and LED Module



LED Type

| Model | Input Voltage | Input Wattage | LED CT / CRI | Lumen (TYP) | Finish | Dimension (L X H X E) | Energy Star |
|-----------------|---------------|---------------|--------------|-------------|------------------------|-----------------------|-------------|
| FL5524D-xxxxK-C | 120V | 17W | 3000K / >80 | 1520 | Satin Nickel / Acrylic | 25.2" x 4.8" x 3.8" | Yes |
| FL5539D-xxxxK-C | 120V ~ 277V | 24W | 3000K / >80 | 2110 | Satin Nickel / Acrylic | 37.0" x 4.8" x 3.8" | Yes |
| FL5554D-xxxxK-C | 120V ~ 277V | 36W | 3000K / >80 | 3220 | Satin Nickel / Acrylic | 48.8" x 4.8" x 3.8" | Yes |
| FL5524D-C-MCT | 120V | 17W | 3000K / >80 | 1520 | Satin Nickel / Acrylic | 25.2" x 4.8" x 3.8" | Yes |
| FL5539D-C-MCT | 120V ~ 277V | 24W | 3000K / >80 | 2110 | Satin Nickel / Acrylic | 37.0" x 4.8" x 3.8" | Yes |
| FL5554D-C-MCT | 120V ~ 277V | 36W | 3000K / >80 | 3220 | Satin Nickel / Acrylic | 48.8" x 4.8" x 3.8" | Yes |